



Panoramic view from balcony in summer



Balcony ready for use in the summer – there is also space for 2 sun loungers at the opposite end



View to the north of Silvi Marina - View to the east and Adriatic Sea - View to the south (Pescara)

Living Room

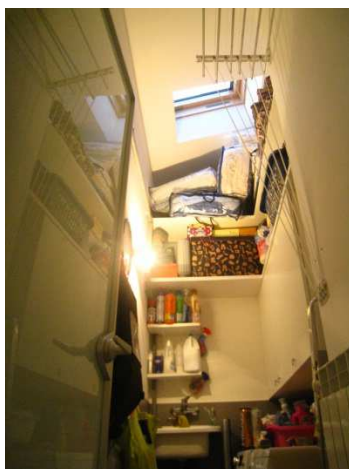


Living room seen from terrace door, show front door and built in storage to left

Door on the right leads into the kitchen – concealed sliding door

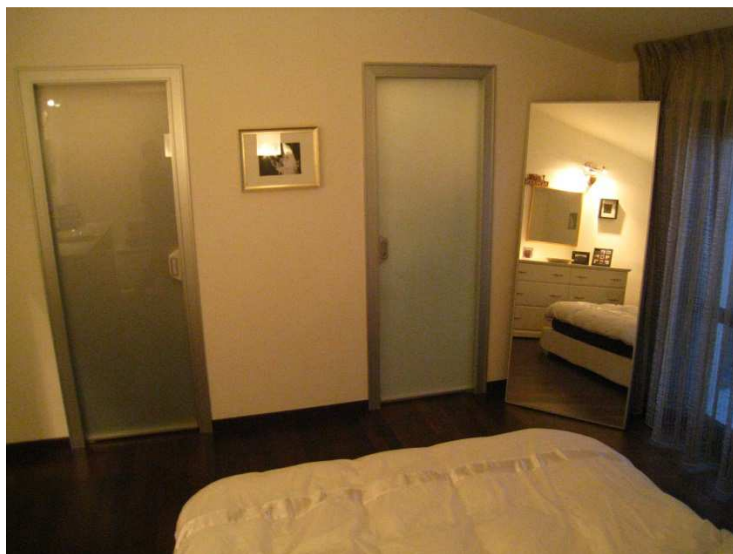


Laundry and storage room



Fits washing machine and tumble drier – built in shoe cupboards and shelving

Master Bedroom

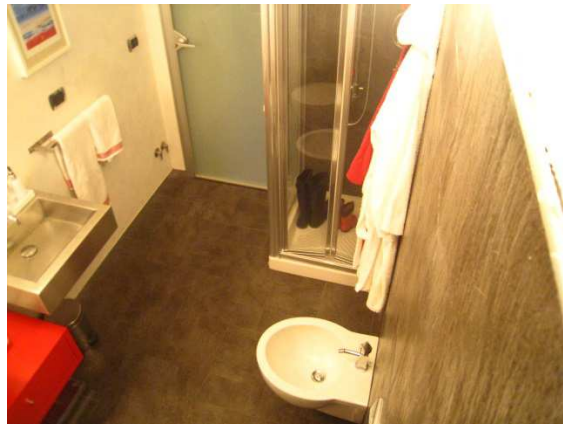
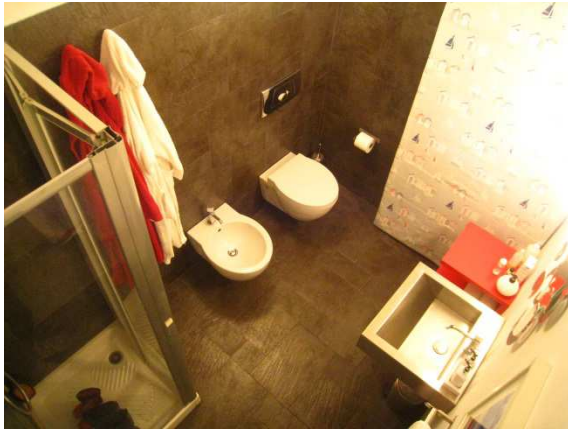


The master bedroom boasts a large walk-in wardrobe (left) and en suite (right) with walk in shower

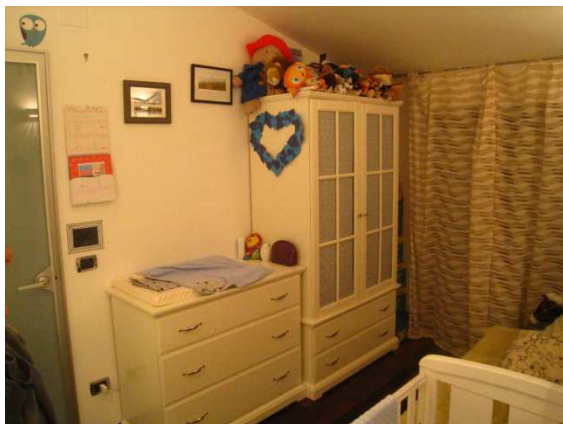
The bedroom has double doors and the en suite has a single door which all give on to the terrace



Family Bathroom

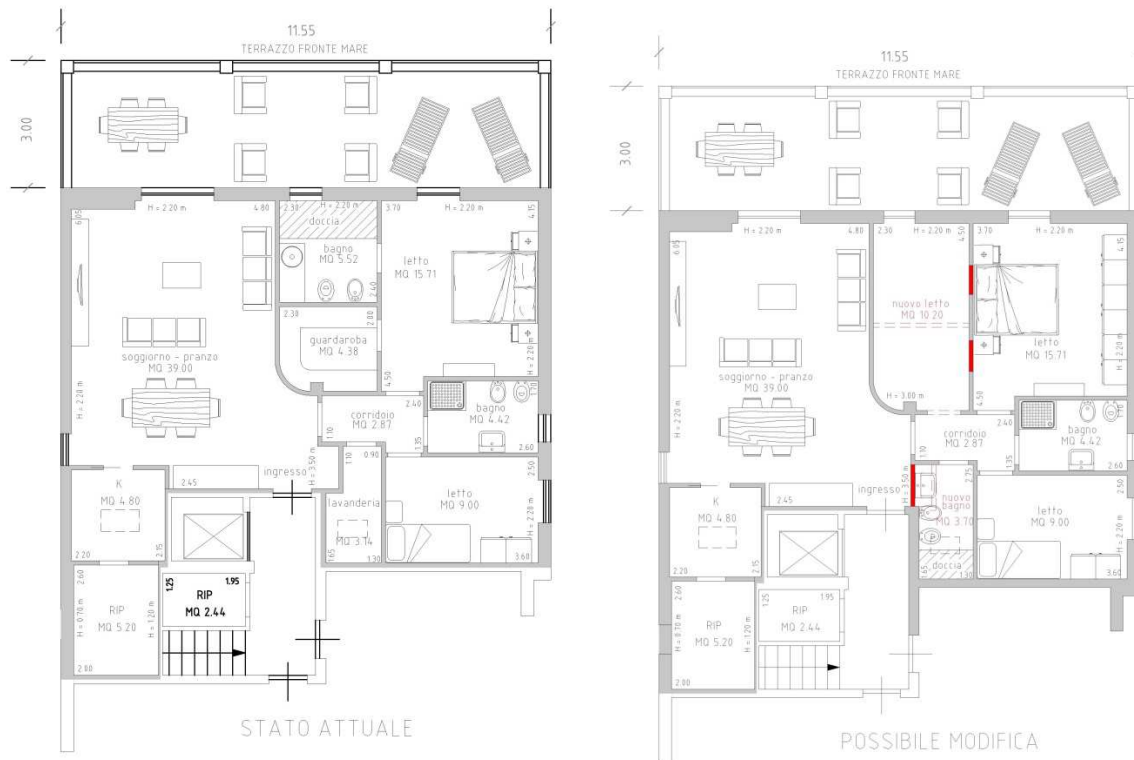


Second Bedroom



The second bedroom can comfortably take a child's bed and a sofa bed or bunk beds

The window takes the form of double doors which also have a sea view



The house is currently in the format indicated in the left-hand plans. However, with minimal modification it could easily be made into a 3 bedroom apartment, as shown to the right.

This beach-front apartment is located in the village of Silvi Marina, just 10km from Pescara and Abruzzo International Airport and a 45 minute drive to skiing resorts. A blue flag winner, Silvi Marina has beautiful white sandy beaches which are tranquil in the winter and lively, with beach clubs in the summer.

The apartment is the top floor of the building a boasts extremely high ceilings. The whole apartment has been finished to an exceptionally high modern spec with glass and aluminium doors throughout (many sliding doors), parquet solid wood flooring and air-conditioning. Both the master bedroom and master en suite have doors which lead on to the large terrace, which can be used as a lounge and dining room in the summer. The large lounge diner also has double doors which give on to the terrace and also lateral views from Silvi Paese down to the sea. The kitchen is practical and can be closed off from the main living area. Behind the kitchen is a large storage area (step required for access). The second bedroom also has sea views, through double doors. There is a family bathroom next to it and also a laundry and storage room. The apartment is accessed by a lift or stairs. Off road parking is also available.

The asking price is € 400,000

